

KETCHUP THEFT MOST PUZZLING



WERELOCK AND SCRATCH

K.R. THOMPSON

ILLUSTRATED BY BINNY TALIB

Illustrations © Binny Talib, 2025

Werelock LOVES ketchup, it's his favourite food, so you can imagine his horror when he discovers that someone has stolen his emergency bottle of ketchup from his detective bag!

It's up to you to follow the clues, find the thief and get Werelock's ketchup back!

The Suspects

The ketchup was stolen during the thirty minutes that Werelock left his bag in Mayor Alucard's Town Hall office. According to the Mayor's diary, during that time he had four visitors. The ketchup thief **MUST** be either Mayor Alucard or one of these visitors. We search them and don't find the ketchup, but we take their fingerprints.

We officially have five suspects!

Name: Alucard Species: Vampire <i>Cannot touch or eat garlic</i>	Name: S. Herring Species: Gorgon <i>Must not look in mirrors</i>	Name: Uncle Spit Species: Gargoyle <i>Blankets make him fall asleep</i>	Name: Jeeves Species: Monster <i>Scared of fire and bunnies</i>	Name: Bertha Species: Bat <i>Sensitive to loud noises</i>

Now let's search the crime scene!



SCAN ME

Discover more books at
[HachetteChildrens.co.uk](https://www.hachettechildrens.co.uk)



Discover more resources at
[HachetteSchools.co.uk](https://www.hachetteschools.co.uk)



SCAN ME

KETCHUP THEFT MOST PUZZLING



WERELOCK AND SCRATCH

K.R. THOMPSON

ILLUSTRATED BY BINNY TALIB

The Crime Scene

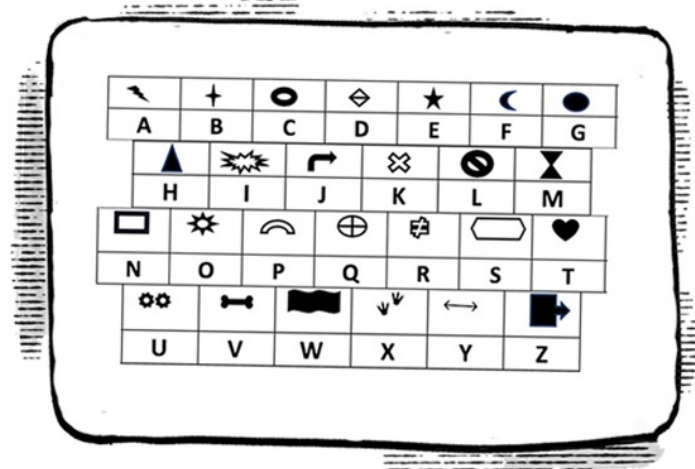
We search the crime scene and notice a card underneath Werelock's bag. It must have been dropped by the thief - we've found our first clue!

But what does it mean?

Can you crack the code and work out where the thief's secret meeting will be?

Front of Card

Back of Card



Top Secret Meeting Message:

Entrance:



Hint: Which letters are underneath each shape on the back of the card. If you replace each shape with that letter do they spell out words?



Before leaving the crime scene, you notice that the card smells strongly of garlic. The thief must have eaten something containing garlic before stealing the ketchup.... does that rule out any suspects?



Discover more books at
[HachetteChildrens.co.uk](https://www.hachettechildrens.co.uk)



Discover more resources at
[HachetteSchools.co.uk](https://www.hachetteschools.co.uk)



KETCHUP THEFT MOST PUZZLING



WERELOCK AND SCRATCH

K.R. THOMPSON

ILLUSTRATED BY BINNY TALIB

The Lake

We rush to the lake where three seemingly identical toothy plants stand guard over three trap doors. Which plant guards the door we need to go through to follow the thief to their secret meeting?

Chloro



Phyll



Fluffy



The odd plant out is _____

SNAP!

The odd plant out gnashes its teeth at us as we try to open the door.

STOP! To enter, you must first answer three riddles!

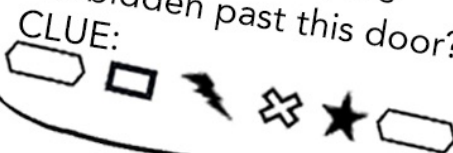
First... What gets bigger the more you take away from it?

Answer: _____

Second... What has a head and a tail, but no body?

Answer: _____

Third... What are forbidden past this door?



Answer: _____

Does the answer to the third riddle rule out any suspects?



Psst! If you need help, check the last page!



SCAN ME

Discover more books at
HachetteChildrens.co.uk



Discover more resources at
HachetteSchools.co.uk



SCAN ME

KETCHUP THEFT MOST PUZZLING



WERELOCK AND SCRATCH

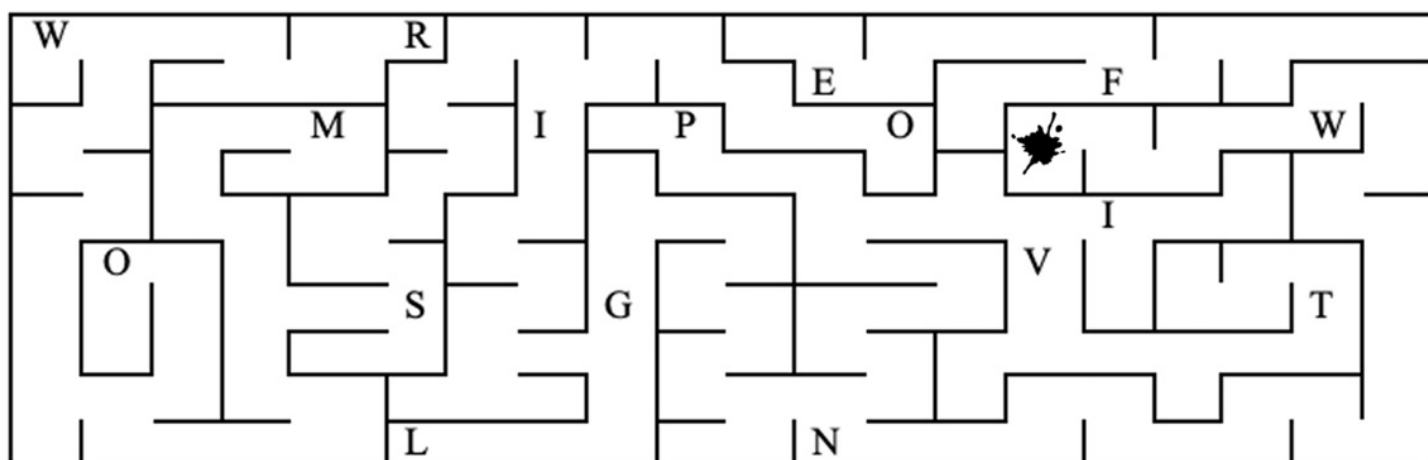
K.R. THOMPSON

ILLUSTRATED BY BINNY TALIB

The Underground Tunnels

The plant hops aside, snarling as we climb down through the trap door and into the darkness below. A faint odour of garlic lingers in the air and from somewhere inside the maze we hear a ketchupy SPLAT! We're catching up with the thief!

Quickly! Can you find a way through the maze to the splat mark?



What letters do you pass on the route to the splat mark?
Can you unscramble them to spell a word that tells us something about the ketchup thief's appearance?



Werelock's
fingerprint



Have a look at the suspects. Can you rule out any more of them thanks to this clue?
Which suspects do we have left?



SCAN ME

Discover more books at
[HachetteChildrens.co.uk](https://www.hachettechildrens.co.uk)



Discover more resources at
[HachetteSchools.co.uk](https://www.hachetteschools.co.uk)



SCAN ME

KETCHUP THEFT MOST PUZZLING



WERELOCK AND SCRATCH

K.R. THOMPSON

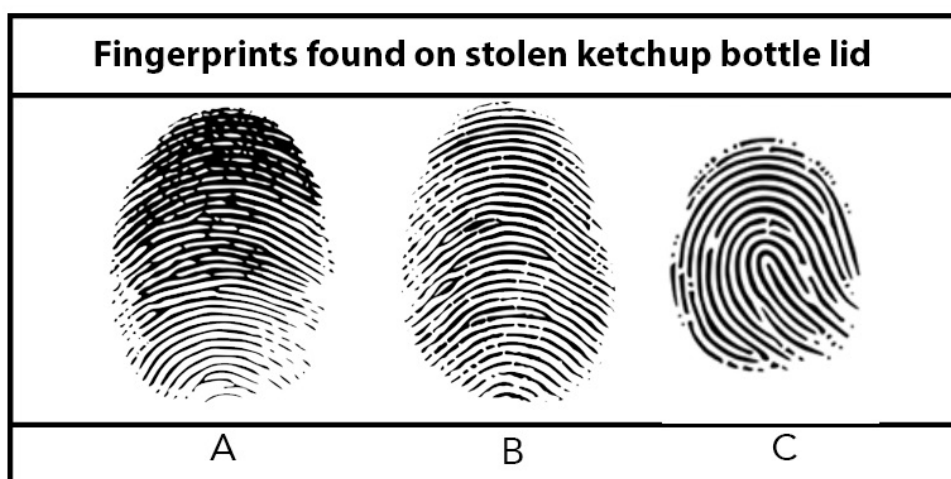
ILLUSTRATED BY BINNY TALIB

Illustrations © Binny Talib, 2025

The Centre of the Maze

We find ourselves in a stone chamber. On the opposite wall is a solid wooden door with a fancy keypad. We gasp as we spot the splodge of ketchup on the floor next to the lid of Werelock's emergency ketchup bottle. We dust the lid for fingerprints and find three clear prints. Two of them belong to Werelock, but one belongs to someone else... the thief!

Examine the three fingerprints found on the ketchup lid and compare them to Werelock's and the suspects' fingerprints. Can you find a match with a suspect?



The fingerprint left
by the thief is letter: _____

The thief is: _____

A good detective is always prepared,
and so are you. In your detective bag
you have lots of helpful items including:

- a. Garlic
- b. A mirror
- c. A blanket
- d. A toy fluffy bunny
- e. A loud airhorn

Which item will help you defeat
the thief and get back
Werelock's ketchup?



SCAN ME

Discover more books at
[HachetteChildrens.co.uk](https://www.hachettechildrens.co.uk)



Discover more resources at
[HachetteSchools.co.uk](https://www.hachetteschools.co.uk)



SCAN ME

KETCHUP THEFT MOST PUZZLING



WERELOCK AND SCRATCH

K.R. THOMPSON

ILLUSTRATED BY BINNY TALIB

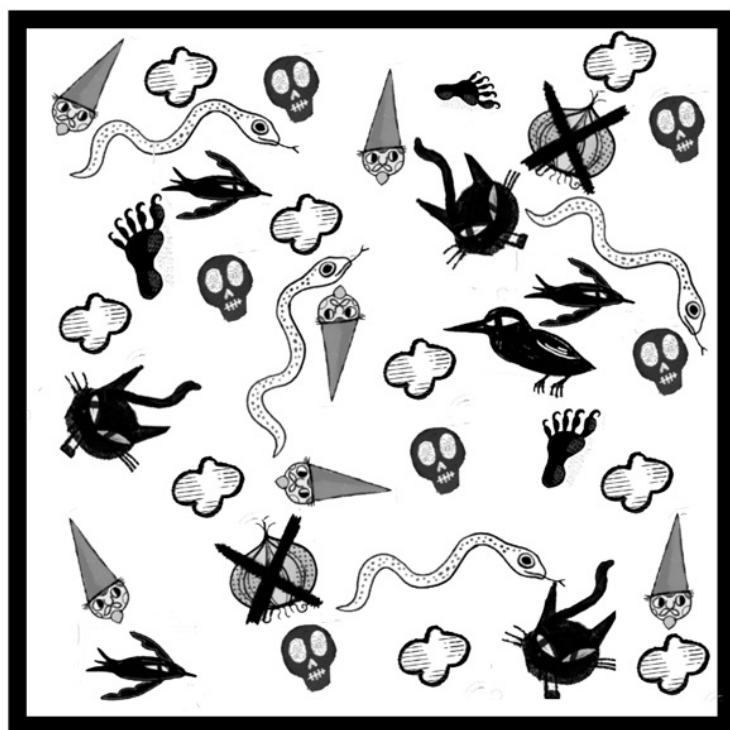
The Final Hurdle

With our item at the ready we march up to the wooden door. It is locked. From the other side we hear the unmistakable sound of ketchup being poured. We need to get through quickly!

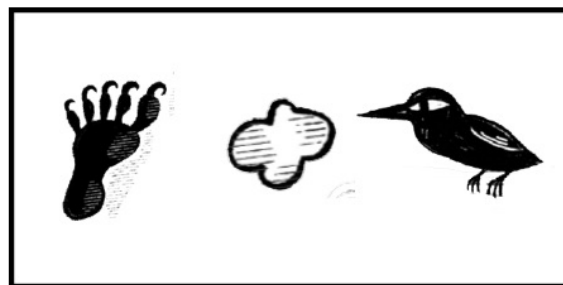
Three symbols flash on the screen above the keypad, but there are only numbers on the keypad. What could the symbols mean? We spot a square panel filled with symbols on the wall next to the door. It must be a clue to the code!

Can you use the symbols to work out the three numbers we need to enter?

Panel of symbols on the wall



Symbols on the keypad screen



The three number code is:

— — —



Psst! If you're stuck, try counting how many of each keypad symbol there are in the panel on the wall!



SCAN ME

Discover more books at
[HachetteChildrens.co.uk](https://www.hachettechildrens.co.uk)



Discover more resources at
[HachetteSchools.co.uk](https://www.hachetteschools.co.uk)



SCAN ME

WERELock AND SCRATCH

ILLUSTRATED BY BINNY TALIB

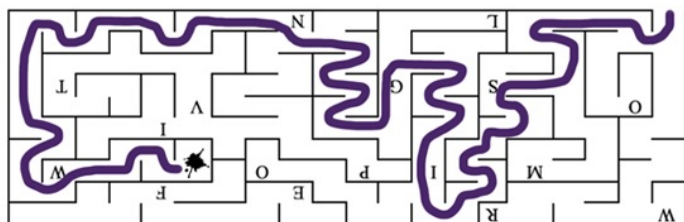
Holding the air horn we catch a glimpse of Bertha as she turns to face us, Werelock's ketchup bottle clenched tightly in her claws. Without hesitating, we press the air horn. AWOOGA! Bertha squeals, but there's no time to relax just yet - Bertha has dropped Werelock's ketchup!



Later we learn that Bertha stole Werelock's ketchup because she believed it would give her super detective powers, just like Werelock. Little did she know that we ALL have the power to be detectives - we just need to keep stretching our brilliant puzzle-solving brains!

Thanks to you, Werelock and Scratch and the case of Ketchup Theft Most Puzzling is officially solved!

A black and white cartoon illustration of a fox character. The fox is wearing a fedora-style hat with a checkered band and a trench coat with skull-shaped buttons. It has its hands in its pockets and is looking slightly to the left. The drawing style is simple with bold lines and some cross-hatching for shading.



Puzzle Answers (No Peeking!)

The Crime Scene: 'Meet at lake,' Entrance: 'under odd plant out,'
The Park: Chloro. Riddle 1 - a hole. Riddle 2 - a coin. Riddle 3 - snakes.
The Underground Tunnels: Maze solution (see below).
Unscrambled letters spell 'WINGS'.
The Centre of the Maze: Fingerprint C. Belongs to Bertha. We need the air horn.
The Final Hurdle: 391

